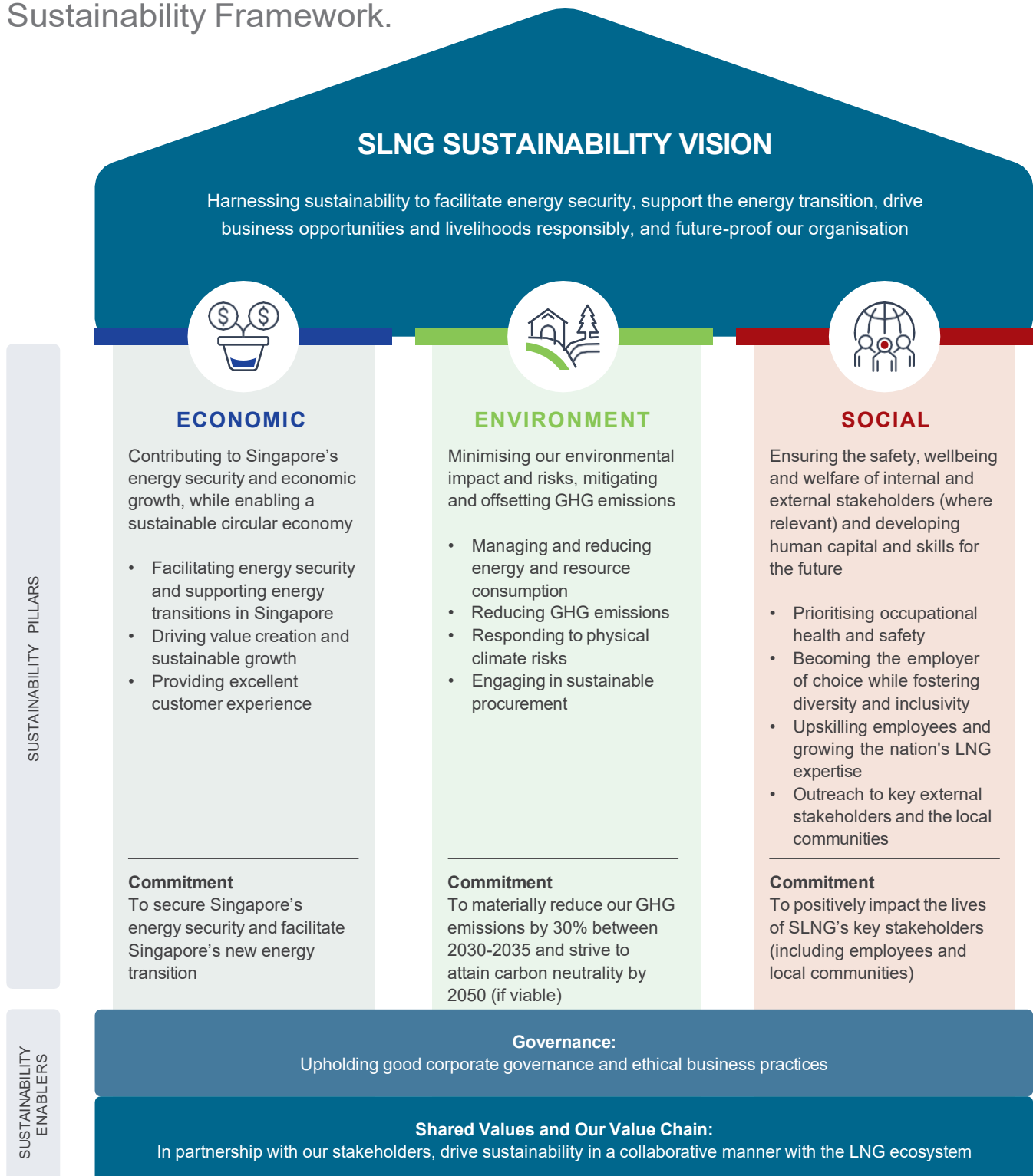


# SUSTAINABILITY AT SLNG

## SUSTAINABILITY APPROACH

SLNG's approach to environmental and social responsibility is outlined in the Company's Sustainability Framework.

This framework defines our Sustainability Vision, which is upheld by the fundamental pillars of Economic, Environmental, and Social commitments to the Company's internal and external stakeholders. This is underpinned by strong Corporate and Sustainability Governance Framework that spans across the Company to provide direction for compliance as well as ethical and responsible business practices.



Note: This document is subject to and must be read with our [disclaimer](#) (please access by clicking the hyperlink)